

BRUCE, WISCONSIN

Lodging for Visiting Sevadars



Dera Baba Sawan Singh
N7732 State Road 40, Bruce, Wisconsin 54819

The following list includes a variety of lodging options such as hotels, motels, private-home rentals, and campsites that are within 15 miles of the Dera. (There are also more than a dozen hotels in Rice Lake, Wisconsin, which is approximately 35 miles from the Dera — a 45-minute drive.) Hotel prices in the area vary greatly, ranging from \$55 per night to over \$200 per night. After checking the prices listed on the hotel website or calling the hotel directly, be sure to compare prices on websites such as www.hotels.com or www.booking.com before you book your room.

Short-term home rentals listed on www.Airbnb.com or www.VRBO.com are best for groups of 6-10 people to share.

Campsites vary in price from \$0 to \$30 per night. You'll find more information, especially about camping, at <http://ruskcountywi.com>. (Click on Lodging.)

There is a newly renovated farmhouse close to the dera that can accomodate 8-10 sevadars. Email us at sevalodging@ishanews.org for more information. Write: "Questions about lodging near the Dera" in the subject line. We hope to see you at the Dera this summer.

HOTELS

City of Ladysmith



Hi-Way 8 Motel

420 Edgewood Ave. E.

Ladysmith, Wisconsin 54848

Main number: 715-532-3346

Alternative number: 715-532-3347

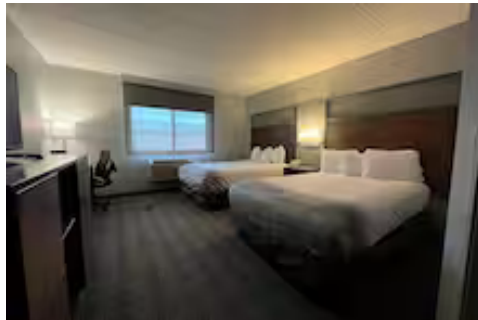
Accommodates short-term and long-term stays

Rooms include microwave, refrigerator

Non-smoking

WiFi

Distance to Dera: 14.2 miles



Americinn Ladysmith (Wyndham Hotels)

W1800 College Ave. W.

Ladysmith, Wisconsin 54848

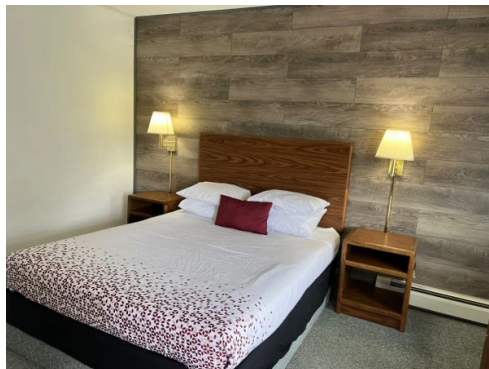
715-443-5059

<https://www.wyndhamhotels.com/hotels/ladysmith-wi>

Non-smoking

Wifi

Distance to Dera: 13.7 miles



Northwoods Motel

W 8500 Flambeau Ave.

Ladysmith, Wisconsin 54848

Reservations: 715-532-6666

<http://Northwoodsmotels.com>

Wi-Fi

Non-smoking

Distance to Dera: 11.9 miles



Cobblestone Hotel

700 West 9th Street S.

Ladysmith, Wisconsin 54848

715-532-7811 or 888-693-8262

<https://www.staycobblestone.com/wi/ladysmith/>

Wifi

Distance to the Dera: 13.6 miles

HOTELS

Village of Exeland



Exeland Motel

11011 W State Hwy. 48
Exeland, Wisconsin 54835
715-943-2781

<https://www.travelwisconsin.com/hotels-motels/exeland-motel-202920>

Wifi

Non-smoking

No pets

A six-room motel.

Two of the rooms have kitchenettes.

The other four rooms have refrigerators and microwaves.

Distance to Dera: 8.3 miles

HOME RENTALS

Blue Hills Area (About 15 miles to the Dera)



The Orchard Shed Cabin

Complete house

Three bedrooms

Three bathrooms

Full kitchen

Sleeps 10

Wifi

Air conditioning

<https://www.airbnb.com/>



Complete house

Three bedrooms

Two bathrooms

Full kitchen

Sleeps six

<https://www.vrbo.com>

CAMPING

Village of Bruce Park

750 W Arthur Ave.

Bruce, Wisconsin

No charge for camping

Three-day maximum stay

Public bathrooms

No other facilities

To reserve a spot, call Village of Bruce office at 715-868-2185.

Give them your license-plate number and contact phone number.

Distance to Dera: 9.4 miles

CAMPING

Rusk County Parks

There are two large campgrounds in Rusk County within a 30-minute drive of the Dera — Audie Lake Campground and Perch Lake Campground. Each campground has 15 campsites, with picnic tables, fire rings and electrical outlet pedestals. Cost is \$30/night per campsite. For more information, call Rusk County Parks at 715-532-2113. Campsite reservations can be made online at <https://parks.ruskcounty.org>

Distance to the Dera: 15 miles

CAMPING

At the Dera

Limited camping is available at the Dera on a first-come, first-served basis.

If you have a **Recreational Vehicle (RV)** —or plan to rent one — you can park it at the Dera during the time you are doing seva. But keep in mind there are no *electric power or water hookups available*, so your RV must be a self-contained type that doesn't require power/water hookups.

If you have a **Tent**, you can pitch it at the Dera during the time you are doing seva in a designated area that is fenced in to discourage furry woodland creatures from making uninvited visits to your tent. Note: to discourage bears from visiting your tent, no food and no body-care products (hand lotion, sunscreen, etc.) will be allowed in tents.

There are porta-potties nearby, and water is available in the greenhouse.

For more information, send an email to sevalodging@ishanews.org. Write "Questions about camping at the Dera" in the subject line."

Distance to the Dera: 0 miles